

ÖçGLE "Óð...

ç" ..

```

ãF CGLE myfile
ÇÄ myfile "µçðµ" .gle
.
.
.... äµµßµæîò
.
.
×F2 æ Alt-x "çGLE#òæ

```

```

µÖ~à. (ÅÇNJUSTAR)
NJSTAR myfile. gle
ÇÖ~à.î-ò-ÖÜ.ÇçÜ.~
(xæµ-Ü-ö-Ç-äpÖ.~) f×Ö
ãÖ~É-Öµ~Ö.~PSC (..É×µç)Æ
ÖÜÖ-Ö-Ö-Ö-Ö-Ö-Ö-Ö-Ö-Ö-Ö-Ö
myfile.gle æ K,îÖ.ä.î-òæ

```

```

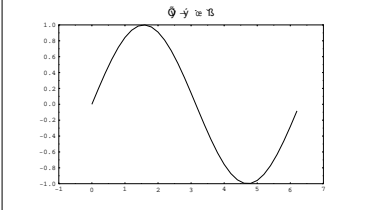
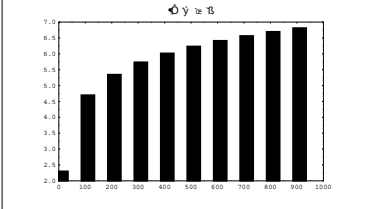
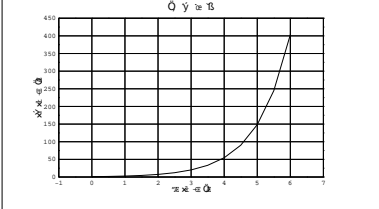
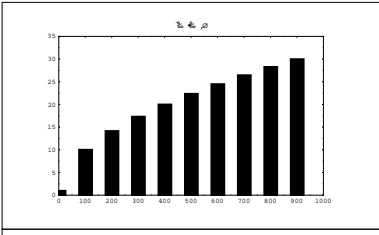
öPpGLE myfile
Ç-µçðµç-Öµçµ.µ myfile.ps
Ü-çGLE myfile
-µµ.µ myfile.psc % myfile.ps
µÜ-Ö-Ö-Ö.äæ

```

```

çSÖPostScript öµçÖ:
Copy myfile.psc PRN
äµ-ö-ö-ö-Ö-Ö-Ö-Ö-Ö-Ö-Ö-Ö-Ö
%µ-ö-ö-Ö-Ö-Ö-Ö-Ö-Ö-Ö-Ö-Ö-Ö
Åç-Ö-Ö-Ö-Ö-Ö-Ö-Ö-Ö-Ö-Ö-Ö-Ö
GS sDEVICE=epon myfile.psc
quit

```



~µçÜ,ç:~Ä-öµÅÖ Sample1.gle, Sample2.gle, Sample3.gle, Help.gle, Block.gle µµ